

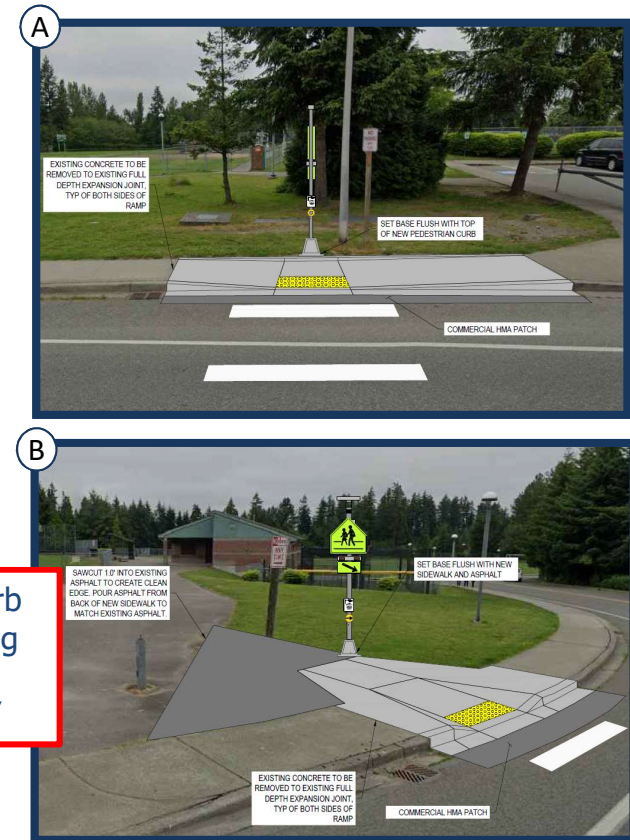
2021 Complete Streets Pedestrian Improvements

Three project areas:

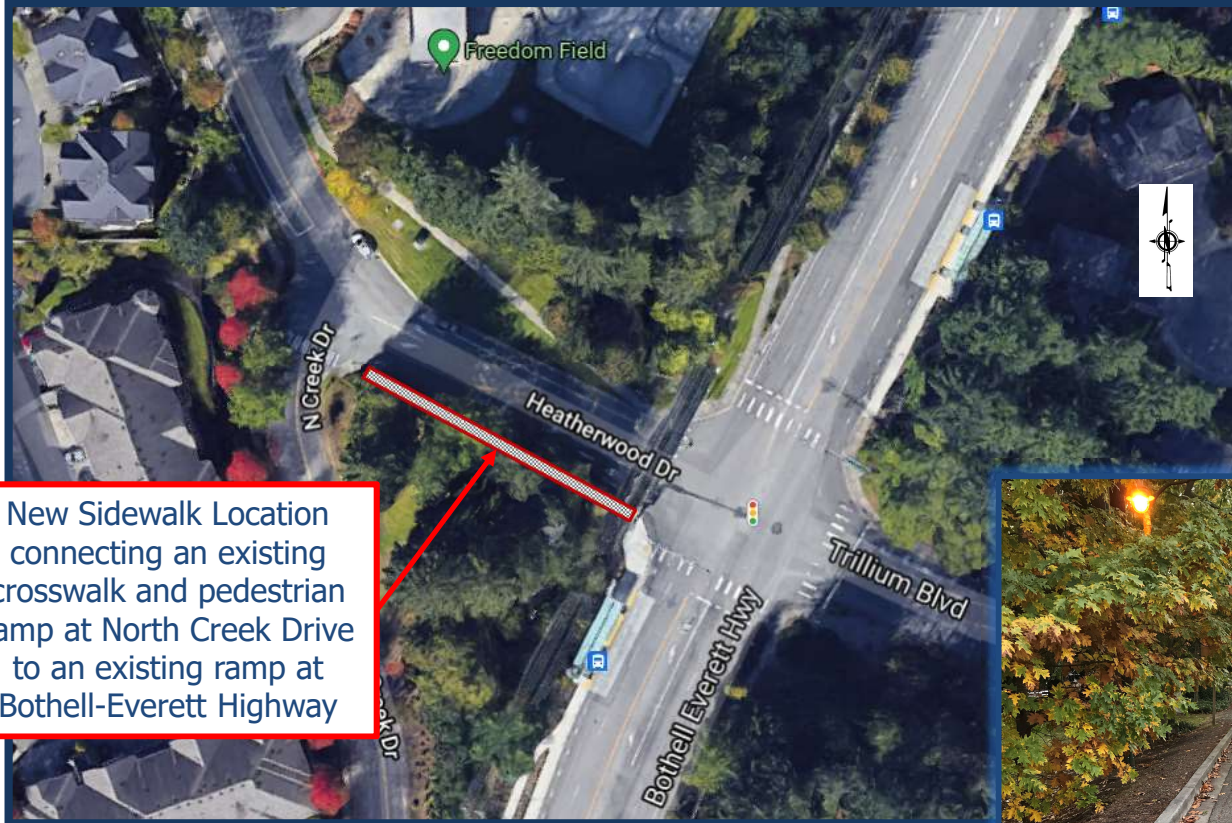
- 136th Street South Mid-block Crosswalk Near Jackson High School
- New Sidewalk On Heatherwood Drive (currently missing sidewalk)
- Pedestrian Safety Improvements on North Creek Drive



Installation of a Mid-Block Crosswalk for 136th Street SE



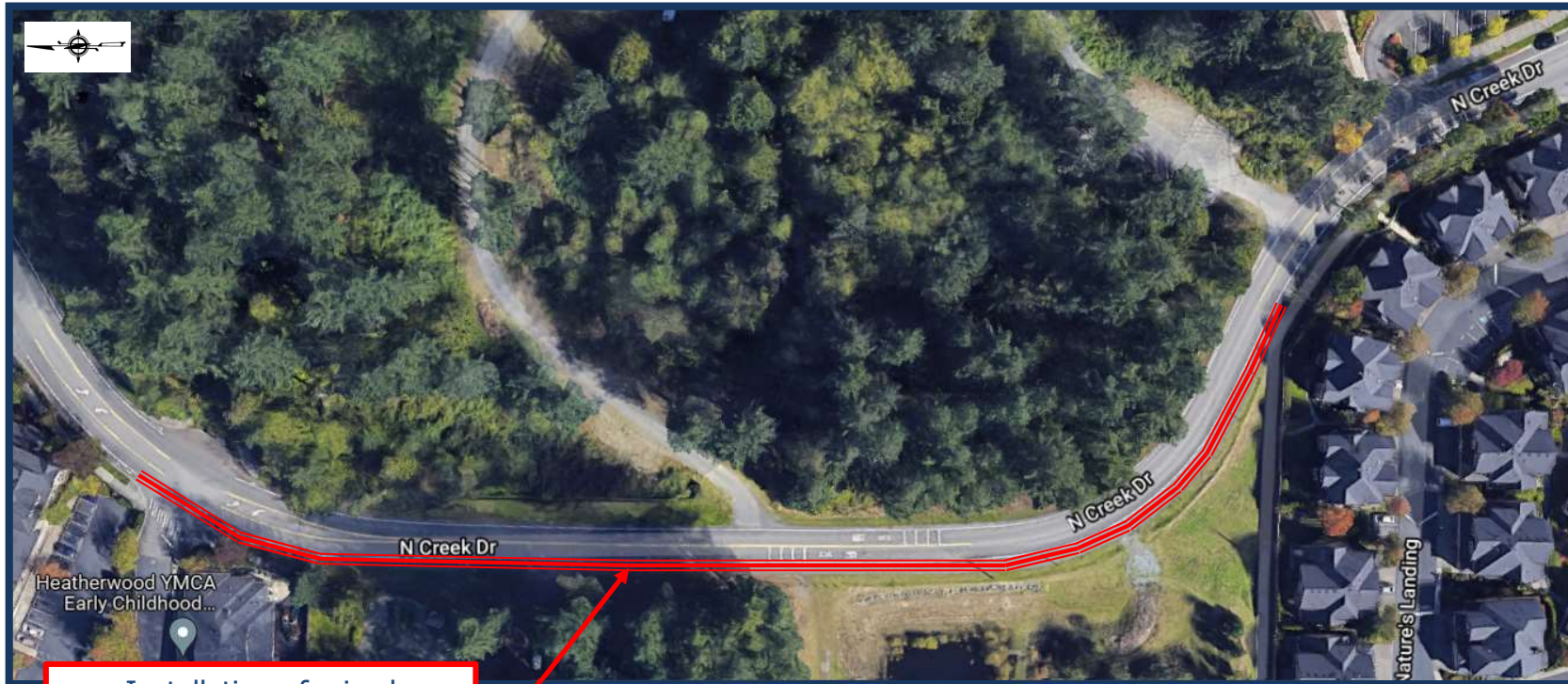
New Sidewalk for Missing Pedestrian Connection On Heatherwood Drive



New Sidewalk Location connecting an existing crosswalk and pedestrian ramp at North Creek Drive to an existing ramp at Bothell-Everett Highway



Pedestrian & Bicycle Safety Enhancements along North Creek Drive



Installation of raised pavement markers, additional signage, and enhanced pavement lane striping

